

**CREALITY**



## **3DPrintMill(CR-30) Full Hotend Kit**

**MFR: 4001030009**

### **Product Information**

All-metal and Integrated Structure

Excellent Heating Block and Heat Sink with Dual Fans

Seamless Junction, No Leakage and Plug

Integral Rigid Structure

Stable Performance and Precise Structure

# Stable performance Excellent accessories



### Thermistor and heating tube

High quality thermistor and heating tube, fast temperature rise, high accuracy of temperature control.



### Heatbreak

Good for heat dissipation of extruder and heat insulation of heatbreak, it ensures long-time work without plugging.



### Nozzle

With optimized design and smooth inner wall, seamless junction prevents filament leakage from nozzle head.

3D PRINTER CREALITY

3DPrintMill

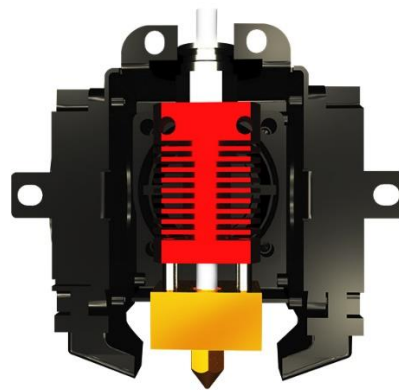
## Full Hotend Kit

Sheet metal cover Sturdy and durable	Compact size and light weight Easy to Replace
Stable performance No leakage and plug	High precision print Excellent heating and cooling system

Full Hotend Kit

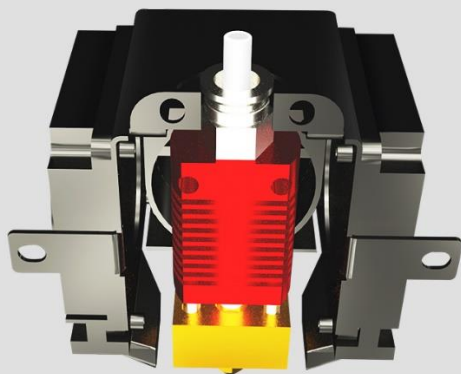
## All-metal and integrated structure

Heat block, heat sink, nozzle(D6=0.4mm), teflon tube, Φ 5 clamp, quick-release claw, silica gel of heating block, thermistor, blower fan, axial fan, fan cover, extrusion slider, sheet metal cover



## All metal sheet metal shell

Important parts with anodized surface treatment process is sturdy and durable, easy to disassembly and maintenance



## Excellent heating block and heat sink + dual fans

Equipped with heating block and heat sink, it has good heat dissipation without plugging. Less worries on print failure. Double fan design with uniform heat dissipation accelerates the model curing

Heating block

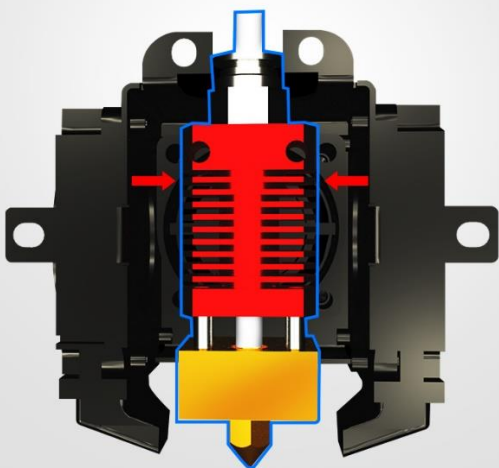
Heat sink

Three fans



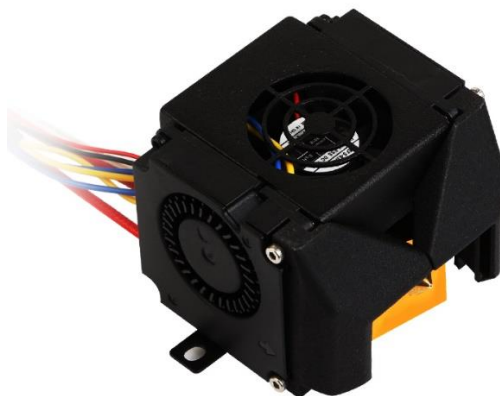
## Seamless junction no leakage and plug

The new quick-release claw and  $\phi 5$  clamp are used to prevent the loosening of Teflon tube, realize smooth feed-in and reduce the printing failure rate.



## Integral rigid structure

Self-developed and brand-new nozzle is equipped with full metal kit with smooth filament path and heatbreak. The temperature is up to 260°C to melt the filament fully and filament-push smoothly.

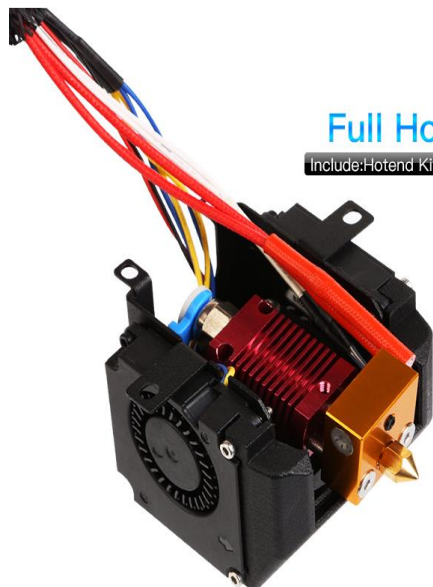


Delicate appearance

Excellent insulation

Heat resistant  
metal material

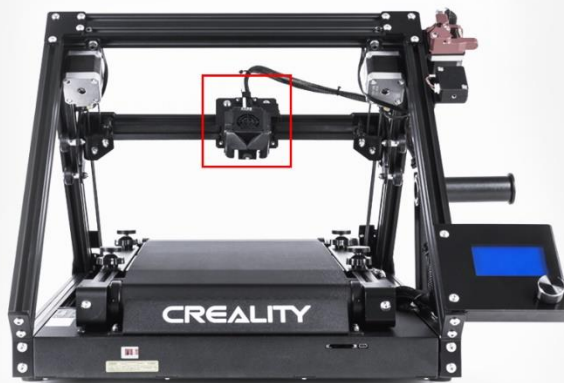
Sturdy rigid structure



## Full Hotend Kit

Include: Hotend Kit+Three fans+Shell

## Installation position



## BASIC PARAMETERS

Product name: Full Hotend Kit

---

Teflon tube: D4\*2

Filament diameter: 1.75mm

---

Material technology: Machining parts and  
sheet metal parts

Hotend diameter: 0.4mm

---

Maximum nozzle temperature: 260°C

Heating tube parameter: 24v 60w

---

Number of nozzles: 1pcs

Applicable model: 3DPrintMill

---

Net weight: 170g

Package size: 160\*155\*70mm

---

Gross weight: 280g

Product color: Black + red

---