

MKS TFT32

Overview

MKS-TFT32 is a colorful touch screen LCD, designed by Makerbase. It is suitable for many main board, such as MKS BASE, MKS GEN, MKS MINI, MKS SBASE, etc .

But can't work with Ramps1.4.

Features

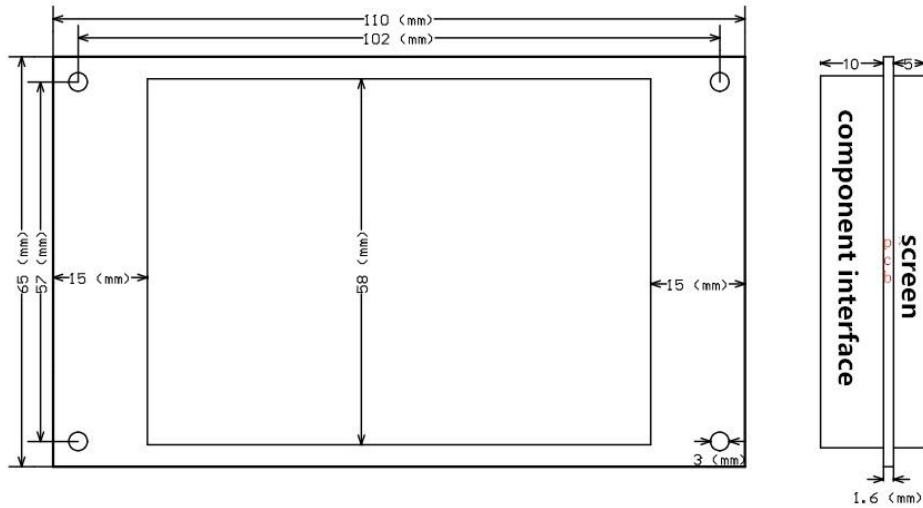
- 1.32 inch colorful touch screen, support U disk and SD card.
- 2.Support continual and easy software update.
- 3.Support MKS Wifi module.
4. No need to adjust firmware, support Marlin, Smoothieware and Repetier.
- 5.Support keeping printing and saving of outage. Also exhausted material detection.
- 6.Support logo and button customization .
- 7.Support user define function.

Website: www.makerbase.com.cn Database: <https://github.com/makerbase-mks>

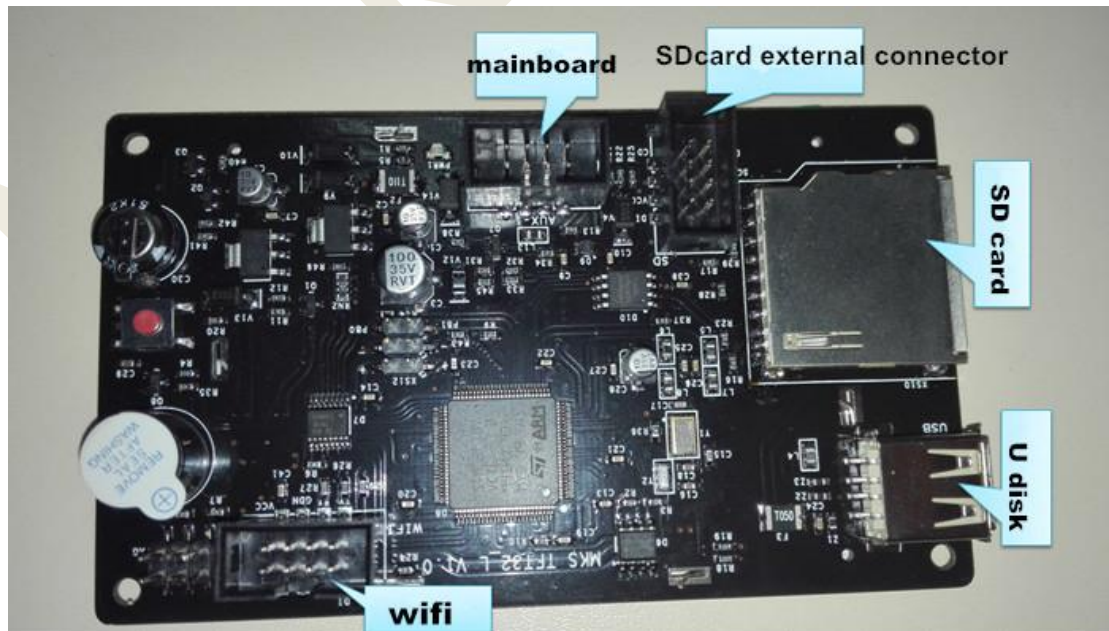
E-mail: 2228481602@qq.com ;529442067@qq.com; 4164049@qq.com;

Address: Room C407,He Jing Industrial Design Science and Technology Park,No. 23 Guangzhou Road, Liwan District East Sha Industrial Zone, Guangzhou, PRC

MKS TFT32 Dimension



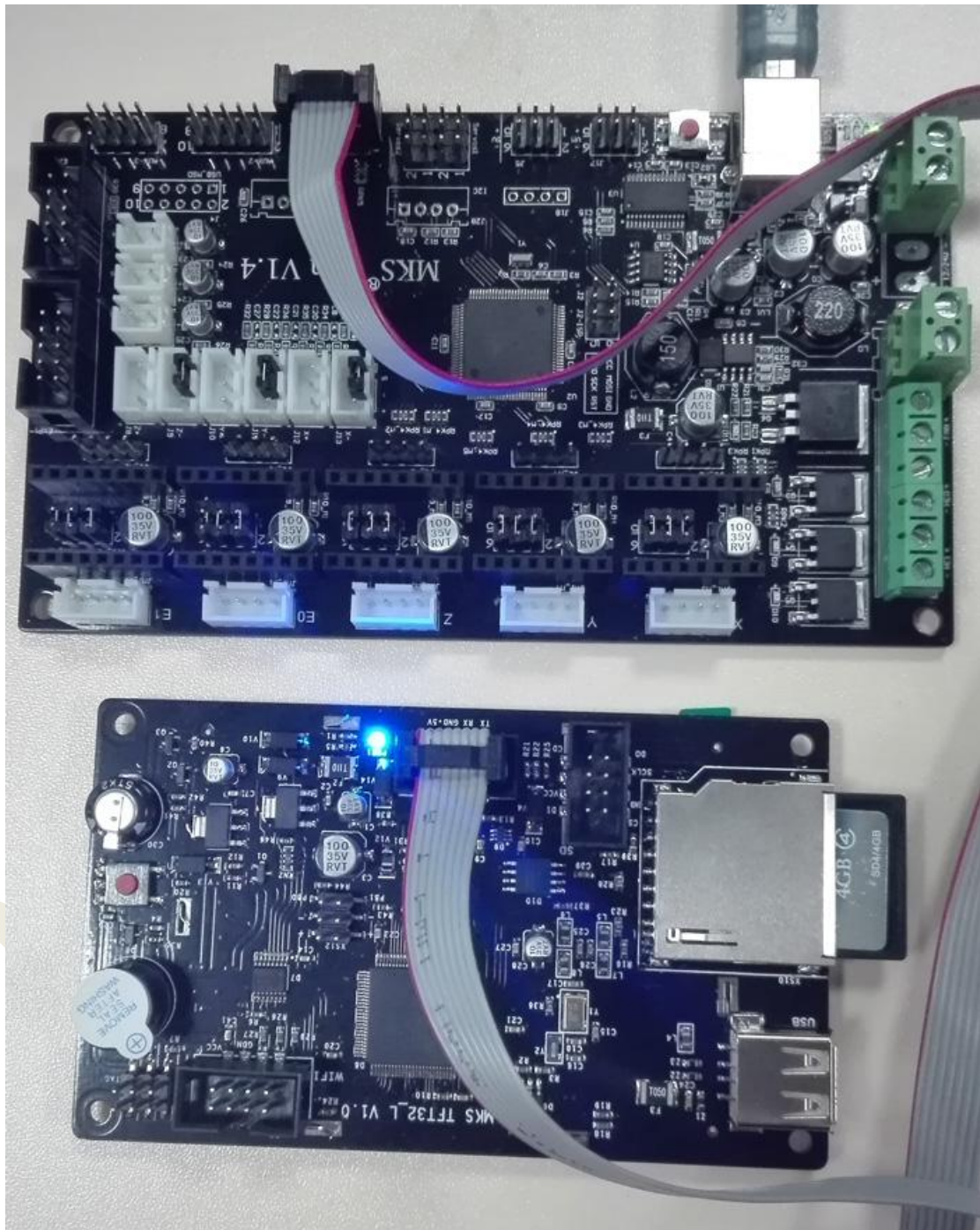
MKS TFT32 Connector



Website: www.makerbase.com.cn Database: <https://github.com/makerbase-mks>
 E-mail: 2228481602@qq.com ; 529442067@qq.com; 4164049@qq.com;
 Address: Room C407, He Jing Industrial Design Science and Technology Park, No. 23 Guangzhou Road, Liwan District East Sha Industrial Zone, Guangzhou, PRC

Connect to MKS GEN

No need V12 external power, connect to Aux-1 of mainboard.



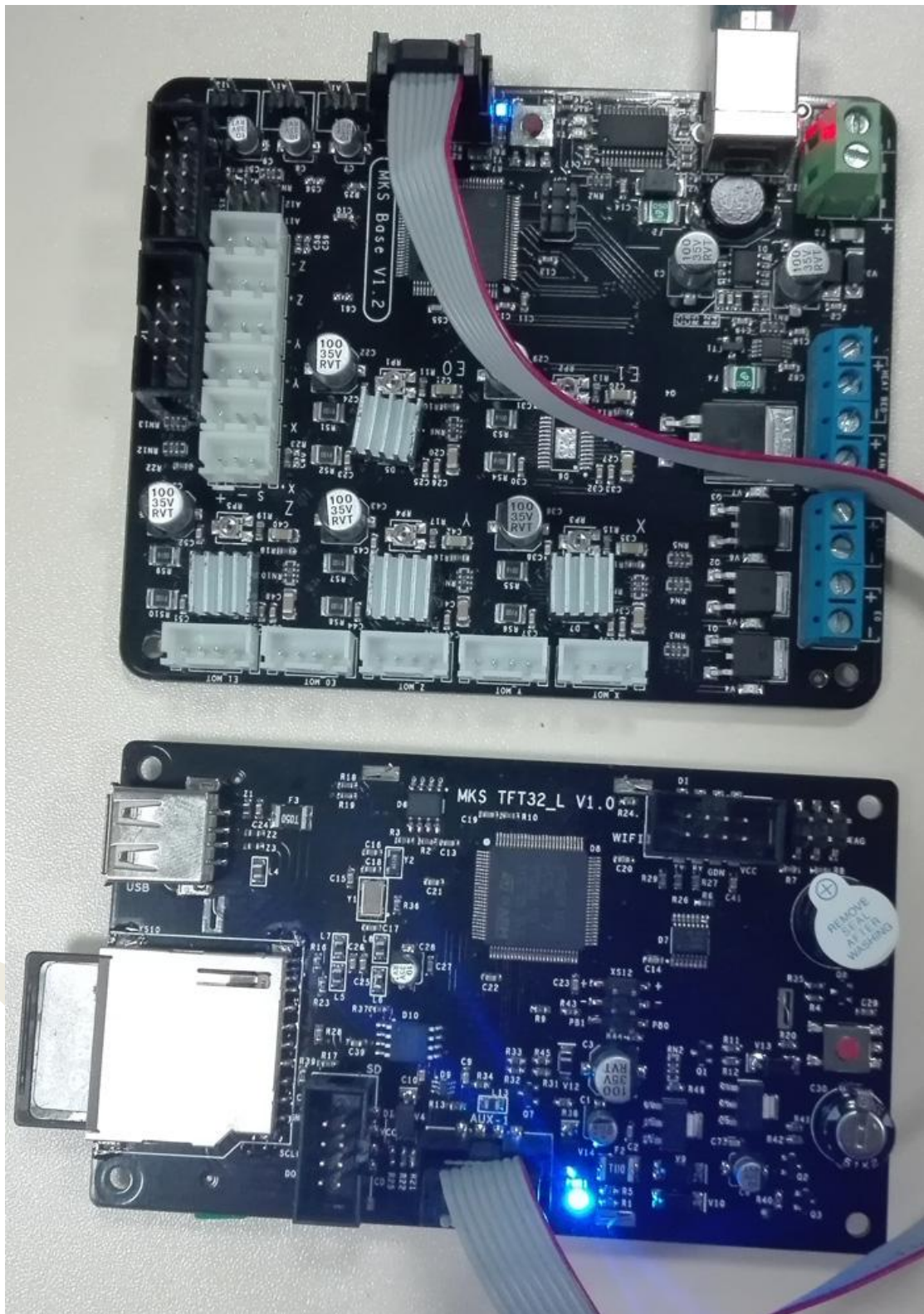
Website: www.makerbase.com.cn

Database: <https://github.com/makerbase-mks>

E-mail: 2228481602@qq.com; 529442067@qq.com; 4164049@qq.com;

Address: Room C407, He Jing Industrial Design Science and Technology Park, No. 23 Guangzhou Road, Liwan District East Sha Industrial Zone, Guangzhou, PRC

Connect to MKS BASE,MKS MINI



Website: www.makerbase.com.cn

Database: <https://github.com/makerbase-mks>

E-mail: 2228481602@qq.com ; 529442067@qq.com; 4164049@qq.com;

Address: Room C407, He Jing Industrial Design Science and Technology Park, No. 23 Guangzhou Road, Liwan District East Sha Industrial Zone, Guangzhou, PRC

Boot Setting

Step1: turn on MKS TFT32 at first time, then enter --> setting --> connection, select baud rate that the firmware use.

Step2: enter --> setting --> model, choose printer type, only Delta and other two options

Others: enter --> setting --> touch screen correction, improving accuracy.

Firmware Update

Copy the latest update firmware to SD card root directory, including:

1. mksftt32.bin. 2. mks_config.txt. 3. mks_pic.

Please do not adjust the file name.

Insert SD card, it will update automatically after restarts.

Outage Saving

When is halted state on printing, then can turn it off directly.

It will keep working on last halted state when next time use.

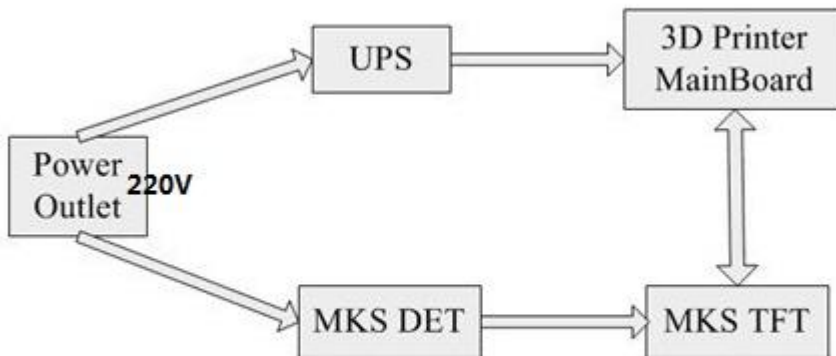
Continuous Printing after Halted State

If power break off during printing, it can continue printing from off place after restarting.

(Motor driver can not work after power cuts, it will cause defective models if the print head remains in the model, you need to improve power failure, detection module and UPS.)

Outage Detection

1. Connect signal S of outage detection module to PB0 pin, cathode and anode connect to the -/+ of PB0 pin.



2. When system fails to connect with power, outage detection module will inform touch screen automatically and enters into printing suspending status. Power supply of UPS will depart printer head from model.

Exhausted Material Detection

1. Connect S on limited switch of detection to PB1 pin, cathode to PB1 pin - .

Caution: it will pause when switch S connects with Ground.

2. When it comes to run out of material, the limited switch will inform touch screen automatically and stop printing.

Photo Customization

1. MKS TFT supports photo customization. Also, logo, button pictures, font color can be self-designed. Method reference: MKS TFT Pic_custom.pdf

2. MKS TFT can support 7 user-defined button which order is up to 200 characters.

Method reference: MKS TFT Pic_custom.pdf

WIFI Connection

1. MKS TFT can support MKS WIFI module.

2. After MKS TFT works with MKS WIFI module, can use Printron, Repetier-Host to proceed remote connect and control. But it may make some functions unavailable.

3. Also, it supports using APP control and Android APP test. If you need to custom-made APP, please contact seller.

4. It provides specific communication interface and APP self-development or other communication software.

Appendix1 mks_config.tx Configuration

mks_config.txt basic configuration

1. Configuration on single and double nozzle : change the value after the colon of “cfg_sprayer_counter” into the nozzle you need.(“1”is single nozzle; “2” is double nozzle)

2. Heated bed configuration: change value after the colon of “cfg_custom_bed_flag” into custom requirements you need.(“1” is with heated bed; “0” is without heat bed)

mks_config.txt WIFI configuration

Website: www.makerbase.com.cn Database: <https://github.com/makerbase-mks>

E-mail: 2228481602@qq.com ; 529442067@qq.com; 4164049@qq.com;

Address: Room C407, He Jing Industrial Design Science and Technology Park, No. 23 Guangzhou Road, Liwan District East Sha Industrial Zone, Guangzhou, PRC

1. The WIFI mode selection :

Change the value after the colon of "cfg_wifi_mode" into the Wifi network

you need ("1" is AP mode, "0" is client mode) .

2. The WIFI configuration of client mode

A. WIFI name: change the WIFI name after the colon of

the field "cfg_wifi_ap_name" into the name of your wireless network

B. WIFI password: change the WIFI password after the colon of the field "cfg_wifi_key_code" into your wireless network' password

C. Dynamic accessing IP address: set the value after the colon of the field "cfg_ip_dhcp_flag" into what you need ("0" indicates static IP address,

"1" indicates dynamic IP address);

D. IP address: change the IP address after the colon of the field "cfg_ip_address" into what you need;

E. IP address mask: change the IP address mask after the colon of the field "cfg_ip_mask" into what you need;

F. Gateway IP address: change the gateway after the colon of the field "cfg_ip_gate" to what you need;

WIFI configuration instruction on AP module

A. WIFI name: change the WIFI name after the colon of the field "cfg_wifi_ap_name" into the hot name you need .

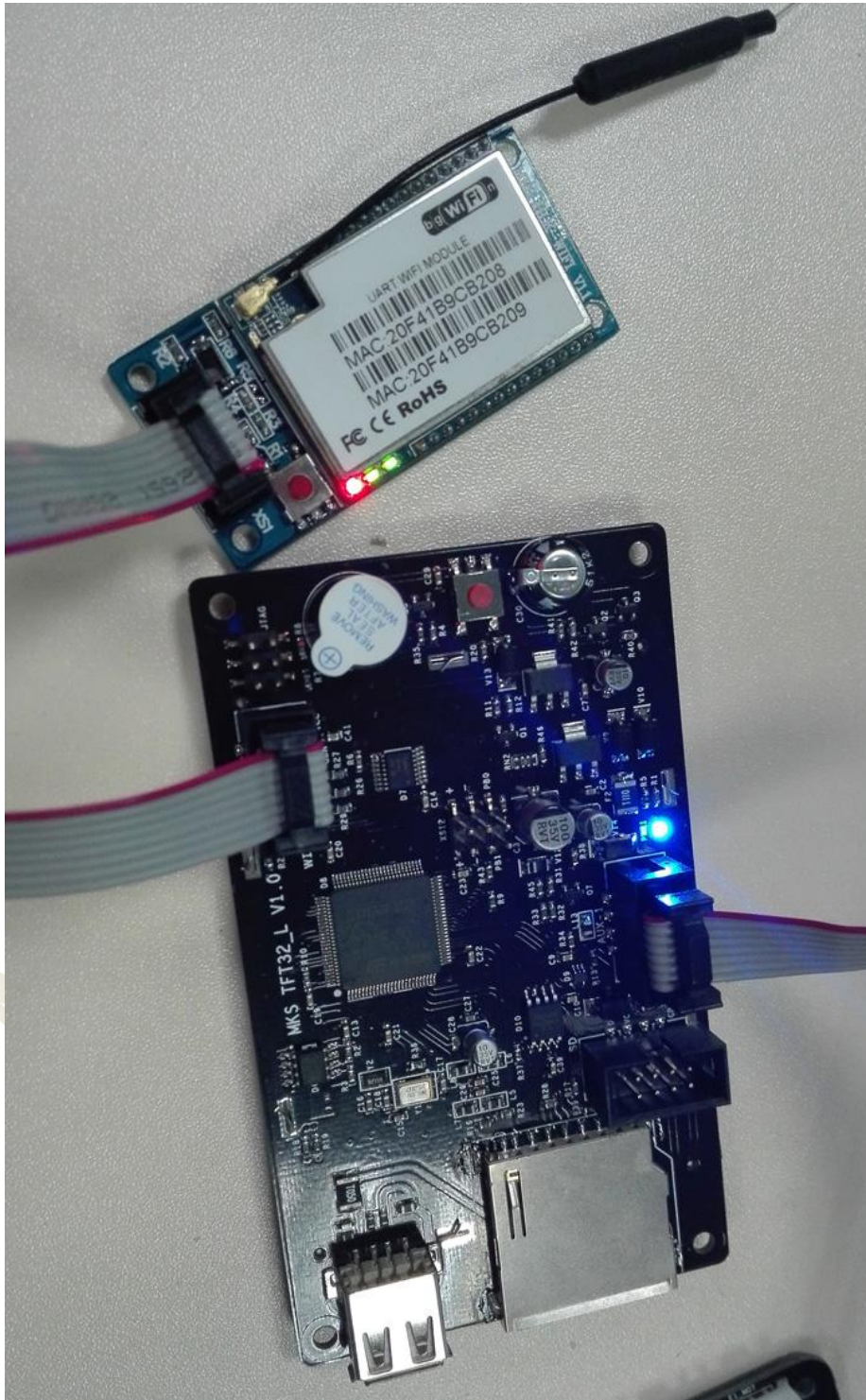
B. WIFI password: change the WIFI password after the colon of the field "cfg_wifi_key_code" into password of WIFI hotspot, and save it.

mks_config.txt photo configuration

Reference: MKS TFT Pic_custom.pdf

Appendix2 Usage on WIFI Module

mks_config.txt, refer to appendix 1 configuration
Connect to WIFI module



Website: www.makerbase.com.cn

Database: <https://github.com/makerbase-mks>

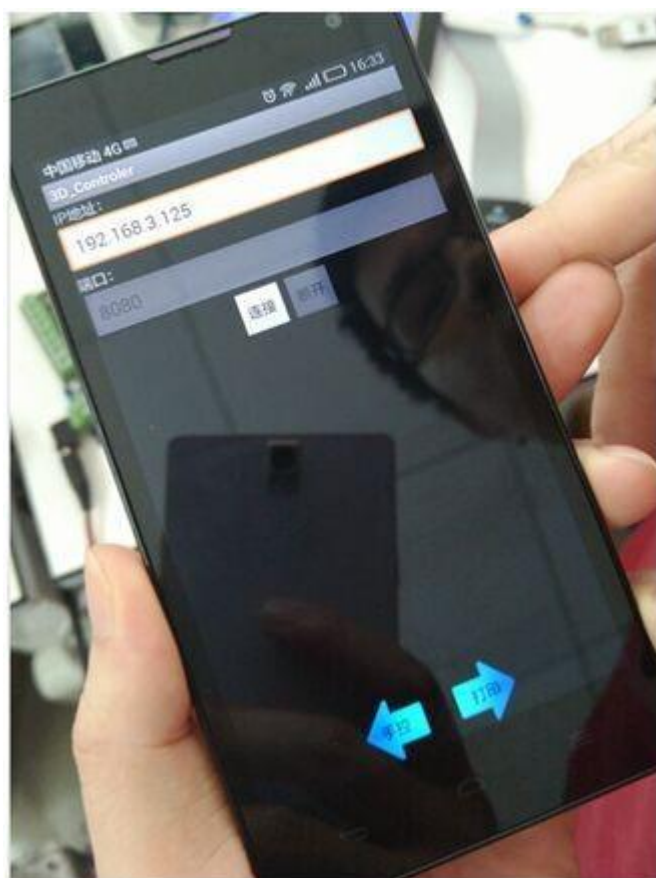
E-mail: 2228481602@qq.com; 529442067@qq.com; 4164049@qq.com;

Address: Room C407, He Jing Industrial Design Science and Technology Park, No. 23 Guangzhou Road, Liwan District East Sha Industrial Zone, Guangzhou, PRC

Check network setting, wait state turns into connection



Use APP controlling printer



Website: www.makerbase.com.cn

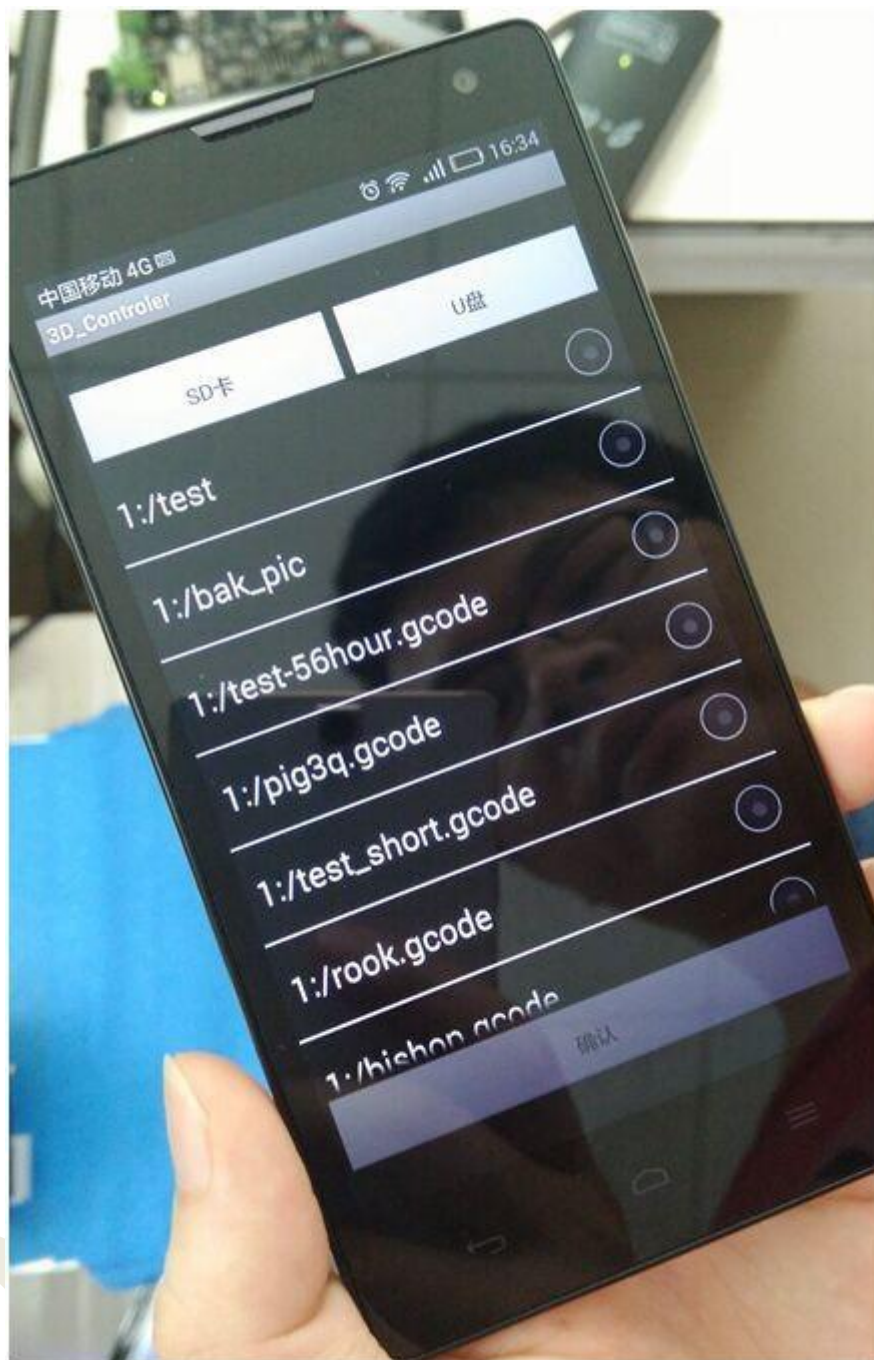
Database: <https://github.com/makerbase-mks>

E-mail: 2228481602@qq.com ; 529442067@qq.com; 4164049@qq.com;

Address: Room C407, He Jing Industrial Design Science and Technology Park, No. 23 Guangzhou Road, Liwan District East Sha Industrial Zone, Guangzhou, PRC



Website: www.makerbase.com.cn Database: <https://github.com/makerbase-mks>
 E-mail: 2228481602@qq.com ;529442067@qq.com; 4164049@qq.com;
 Address: Room C407, He Jing Industrial Design Science and Technology Park, No. 23 Guangzhou Road, Liwan District East Sha Industrial Zone, Guangzhou, PRC

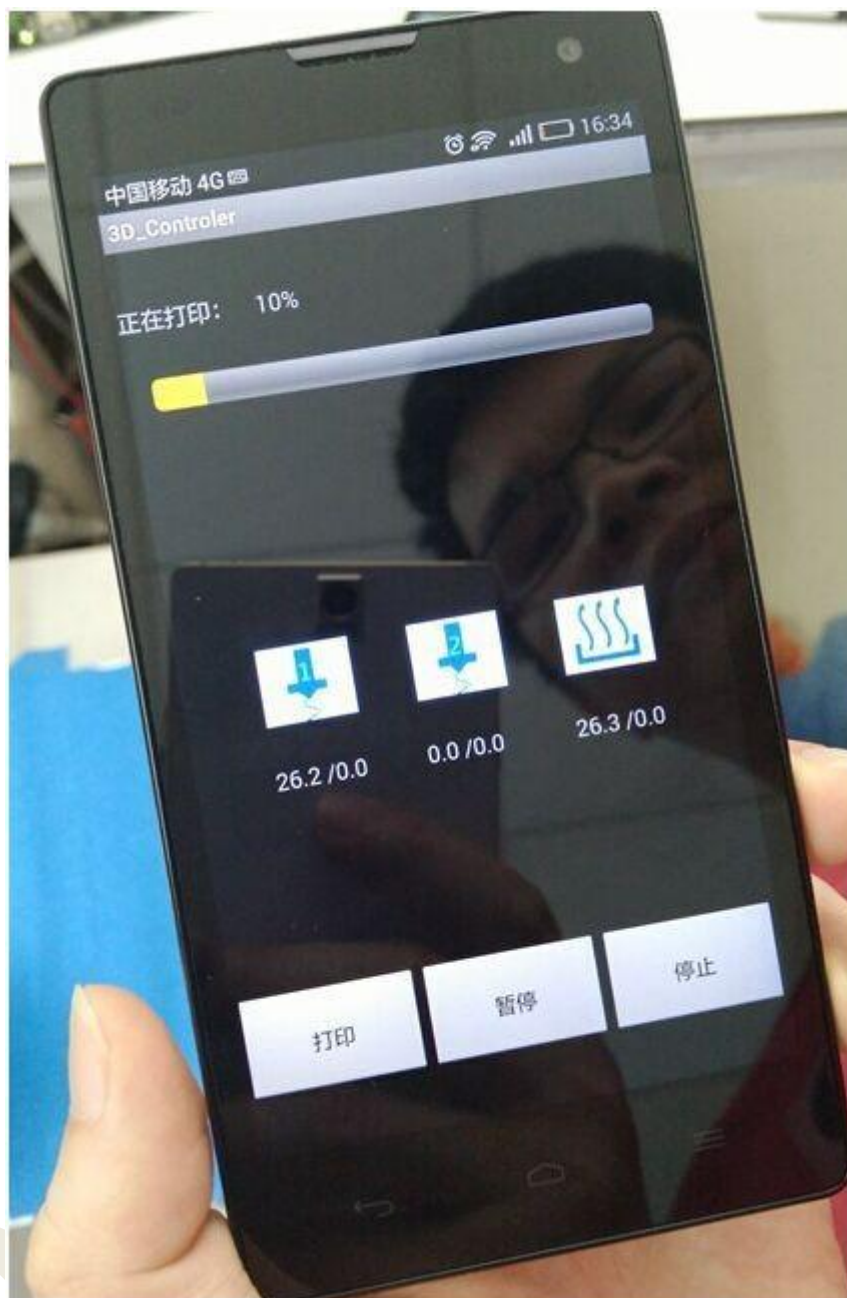


Website: www.makerbase.com.cn

Database: <https://github.com/makerbase-mks>

E-mail: 2228481602@qq.com ; 529442067@qq.com; 4164049@qq.com;

Address: Room C407, He Jing Industrial Design Science and Technology Park, No. 23 Guangzhou Road, Liwan District East Sha Industrial Zone, Guangzhou, PRC



Website: www.makerbase.com.cn

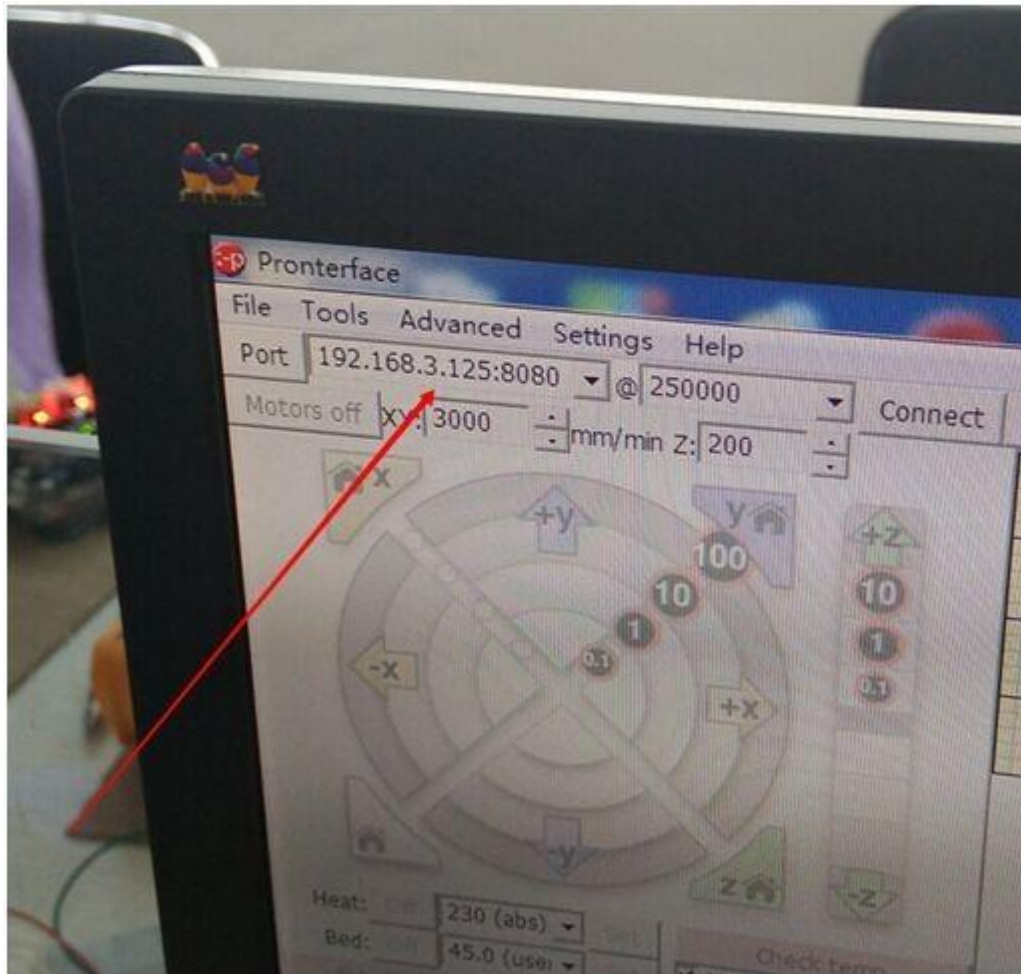
Database: <https://github.com/makerbase-mks>

E-mail: 2228481602@qq.com ; 529442067@qq.com; 4164049@qq.com;

Address: Room C407, He Jing Industrial Design Science and Technology Park, No. 23 Guangzhou Road, Liwan District East Sha Industrial Zone, Guangzhou, PRC

Use Printron remote control printer

Input WIFI IP: 8080



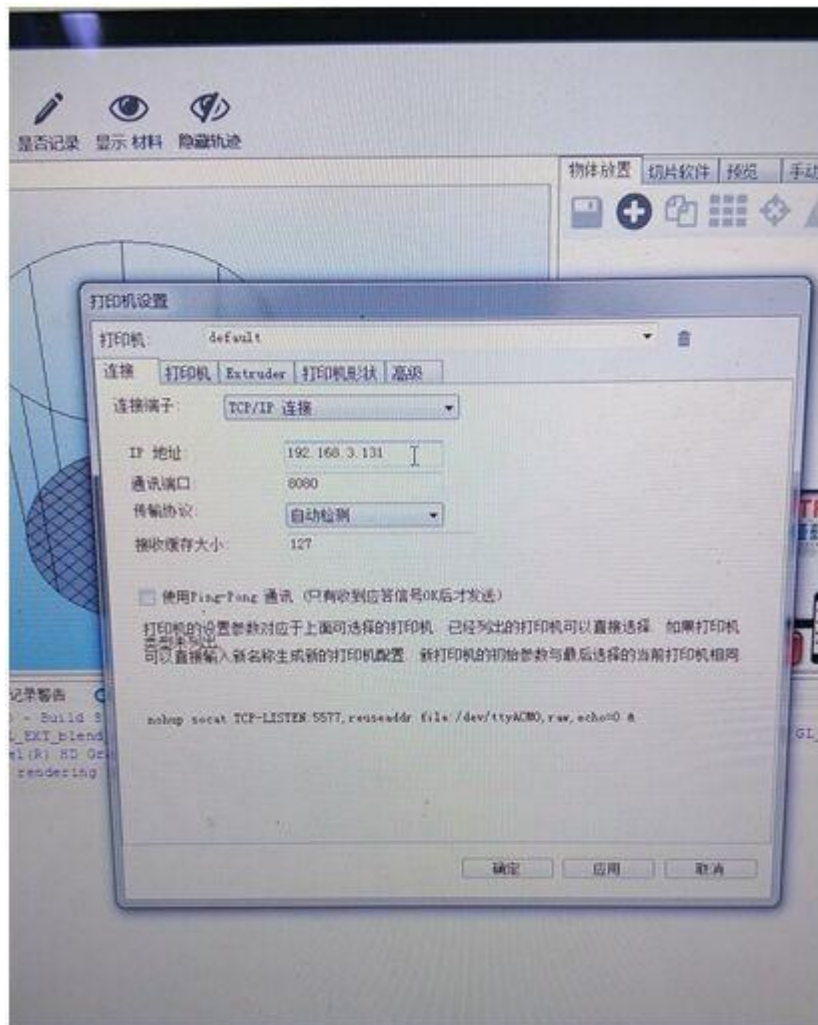
Website: www.makerbase.com.cn

Database: <https://github.com/makerbase-mks>

E-mail: 2228481602@qq.com ; 529442067@qq.com; 4164049@qq.com;

Address: Room C407, He Jing Industrial Design Science and Technology Park, No. 23 Guangzhou Road, Liwan District East Sha Industrial Zone, Guangzhou, PRC

Use Repetier-Host remote control printer Choose TCP/IP connection



Website: www.makerbase.com.cn

Database: <https://github.com/makerbase-mks>

E-mail: 2228481602@qq.com ; 529442067@qq.com; 4164049@qq.com;

Address: Room C407, He Jing Industrial Design Science and Technology Park, No. 23 Guangzhou Road, Liwan District East Sha Industrial Zone, Guangzhou, PRC